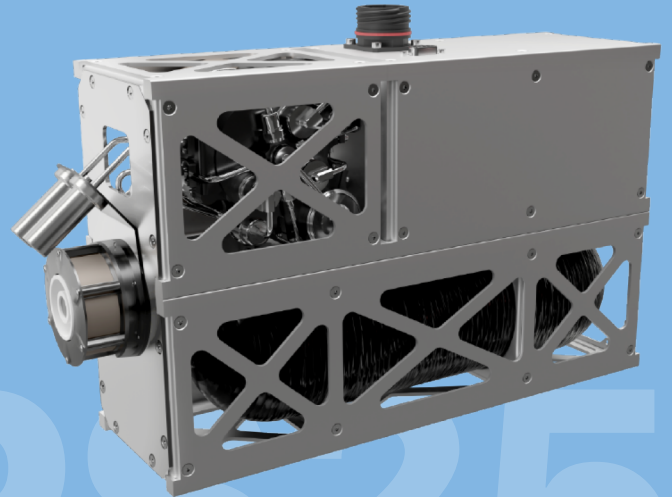


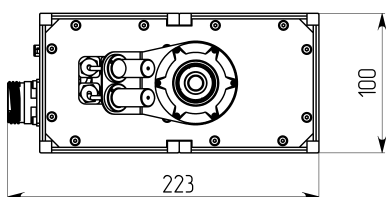
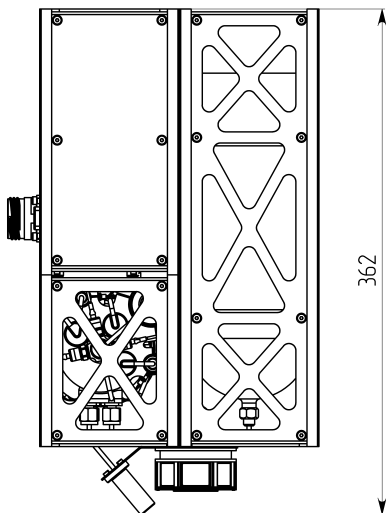
Basic

The SPS25 Propulsion System was designed for small and medium satellites and able to adjust the orbit parameters and insure the maneuverability of satellites in space.

The propulsion system includes one ST-25 (two hollow cathodes), Xenon feed system and Power processing unit (PPU).



Technical Information



Type of thruster	Hall Effect Thruster (ST-25)
Propellant	Xenon
Consumption power of propulsion system	100 - 200 W
Volume of xenon tank	1.4 liter (It depends on mission)
Thrust	5–8 mN
Specific impulse	Up to 1200 s
Total impulse	16 kN·s
Efficiency of PPU	not less 95%
Mass of propulsion system	~ 6 kg (without propellant)
Cathode	Heatless Hollow Cathode
Life-time (estimated)	550 hours